

reacts cautiously, he will be fine: 26.♖b1! c3 27.♞xb7† ♕e6 28.♙xc3! dxc3 29.♞b3 and he will never lose.) 24.bxa6 bxa6 25.♞b1 ♖f7 26.♞b6† ♖d6 27.♞xa6 ♞xc4 Both players have their advantages here, but I would be seriously surprised if White were to lose this position.

22...cxd4

Black now governs the dark squares.

23.♙f1

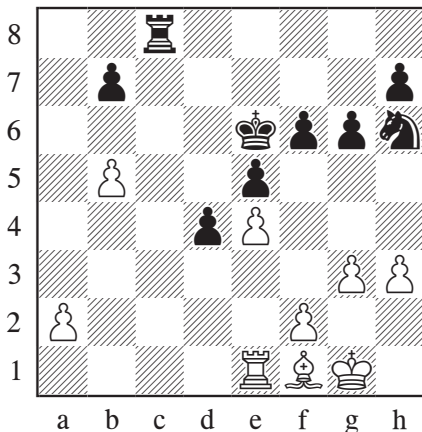
23.bxa6 bxa6 24.♞b1 looks more logical. Black is better, but White should manage to hold the position with active play.

23...axb5 24.cxb5 ♙b4 25.♖e1 ♙xe1

Avoiding any opposite-coloured bishop endings, just in case.

26.♞xe1 ♕e6

Black has some advantage, but accurate play might still have saved the day.



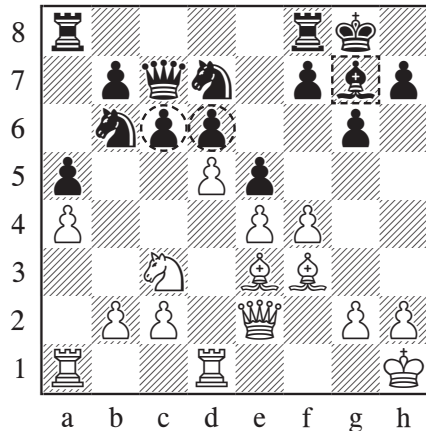
27.a4 b6 28.a5 bxa5 29.♞a1 ♖f7 30.♞xa5 ♖d6 31.♞a6 ♞c3 32.b6?

This pawn now becomes a liability rather than an asset. I have a feeling that from this point the position can no longer be held with best play.

32...♞b3 33.♖g2 ♞b2 34.♙d3 ♞b4 35.♖f1 ♖b7 36.♞a7 ♖c5 37.♙a6 ♞xb6 38.♙c4† ♖d6 39.♙d5 ♞b1† 40.♖g2 f5 41.f3 d3 42.♞a2 ♞c1 43.♖f2 ♞c2† 44.♖e3 f4†
0-1

142. Morovic Fernandez – Seirawan

Novi Sad (ol) 1990



(Position after 16...e7-e5)

Black would love to bring his pieces into play with ...exf4 and ...♖e5. He would not significantly mind if White played (the legal) 17.dxe6 fxe6, when ...d5 is in the air and the e6-pawn is not really weak. And 17.g3?! exf4 18.gxf4 ♞ae8 would give Black a target for counterplay.

17.f5! cxd5

17...♞ad8 18.♞d2 does not diminish the white advantage. Eventually he will threaten dxc6 and Black will have to play ...cxd5 anyway.

18.♙xb6?

This leads to an attack that is only good enough for a draw.

Correct was 18.♖xd5! ♖xd5 19.♞xd5.