

Morrison, Graham - Shaw, John

4ncl, 16.02.2014

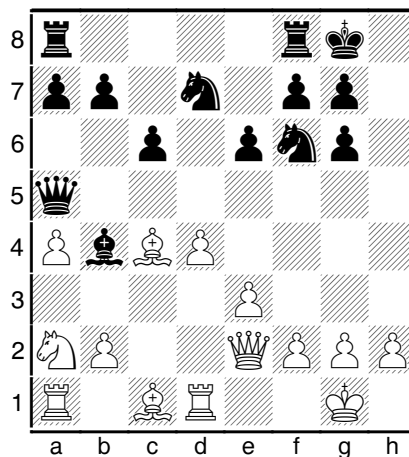
John Shaw

Playing into a sharp opening theory line when you are aware you know none of the theory - good idea or bad idea?  
I answered this challenging question at the 4ncl last weekend.

1.d4 d5 2.♘f3 ♘f6 3.c4 c6 4.♗c3 dxc4 5.a4 ♙f5 6.e3 e6 7.♙xc4 ♙b4 8.0-0 0-0

The line Boris Avrukh covers in "GM Repertoire 17: The Classical Slav" is 8...♗bd7 and I would have played it, but I had not had time to study those chapters, especially as Graham normally plays 4.e3.

9.♙e2 ♙g6 10.♗e5 ♗bd7 11.♗xg6 hxg6 12.♞d1 ♞a5 13.♗a2



13...♞xa4

A rush of blood to the head. I knew this was the critical line, but had no clue what was meant to happen next.

13...♙e7 14.e4 ♞h5 is much more my plodding style, as in T. Woodward - J. Shaw, Sunningdale 2007. Maybe White is a touch better, but it is not scary.

14.e4 ♞a5 15.e5 ♗d5 16.h4

This is very scary indeed.

16...♞fe8!?

I made this up over the board, but I see it has been played before.

16...c5 is a principled alternative.

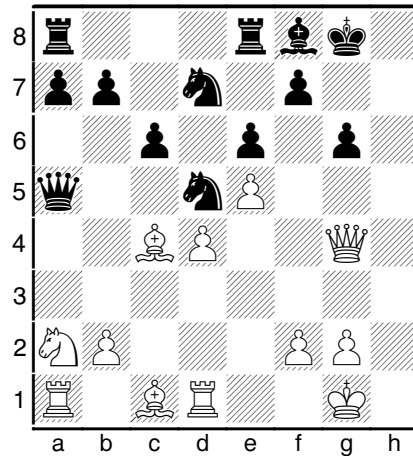
17.h5 gxh5 18.♞xh5 g6 19.♞g4

White certainly has attacking chances on the kingside.

19...♙f8

Seems sensible, but there were also other options:

19...♗g7; 19...♙e7



20. ♙d2N

20. ♙g5 ♜c7 (20...♙g7N) Jepsen - Walinder, Malmo 2012. 21. ♞d3N

20... ♜b6 21. ♞c3 ♞xc3 22. bxc3 a5

Man with a plan. But later I kept to the plan too rigidly.

23. ♙d3

23. ♙g5 ♙g7 24. ♞d3!?

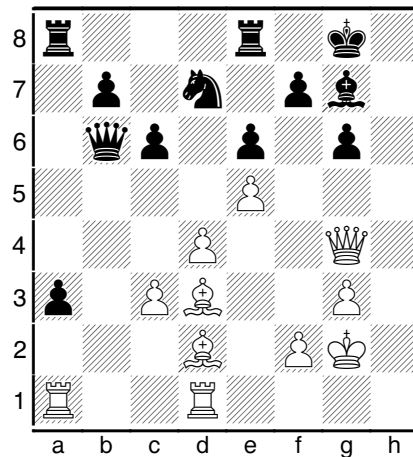
23... ♙g7 24. g3

White's plan is clear to see: ♙g2, and double major pieces on the h-file. I was comparing to a Dragon and thinking I should not get mated as my king might run to f8, but I underestimated how much power the e5-pawn adds to the attack, compared to a Dragon.

24... a4 25. ♙g2 a3?

My first big mistake (other than the huge practical point of choosing this line at all on move 13).

I needed to prepare a sac on e5, with, for example, 25... ♜d8 26. ♙g5 ♞xe5 27. dxe5 ♜d5+ 28. ♙g1 ♜xe5∞ With 3 pawn for the bishop, anything could happen.

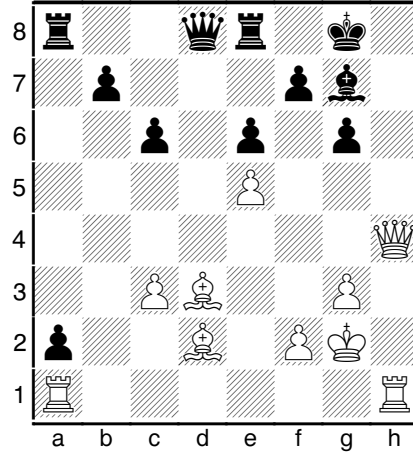


26. ♖h4! a2 27. ♜h1 ♜xe5

My time had all but disappeared and my position is collapsing. "Desperation" is the traditional annotation.

28. dxe5 ♖d8

In swindle mode. 28... ♙xe5 29. ♙xg6 is fatal.



29. ♖h7+!

I was hoping for 29. ♙g5 ♖d5+! (Not 29... ♖xd3? 30. ♖h7+ ♜f8 31. ♖xg7+ and mate) 30. ♜g1 ♖xe5∞

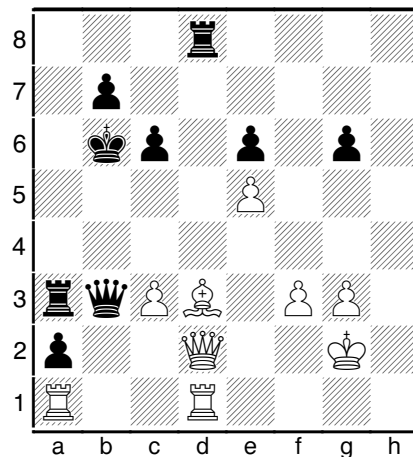
29... ♜f8 30. ♙h6!

The cheeky 30.c4! also works, enabling a check on b4.

30... ♖d5+ 31. f3 ♙xh6

31... ♖xe5 32. ♖h8+-

32. ♖xh6+ ♜e7 33. ♖g5+ ♜d7 34. ♜hd1 ♜c7 35. ♖f6 ♖b3 36. ♖xf7+ ♜b6 37. ♖f4 ♜ed8 38. ♖d2 ♜a3



39. ♜db1! axb1 ♖ 40. ♜xb1 ♖xb1 41. ♖e3+

An excellent game by Graham, which nudges him closer to the 2400 rating that will earn him a well deserved IM title (he has all the required norms).

1-0

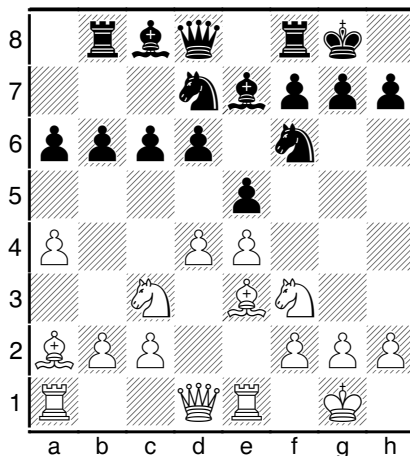
Franklin, Samuel (2370) - Aagaard, Jacob (2518) C41

4NCL Hinckley Island (6), 16.02.2014

Jacob Aagaard

This game was rather uneventful. There are some interesting deep strategic considerations, with the need for White to be active when he has a slightly worse structure. But mainly, for me, the game is a candidate move exercise on move 19.

1.e4 d6 2.d4 ♟f6 3.♟c3 e5 4.♟f3 ♟bd7 5.♟c4 ♟e7 6.0-0 0-0 7.♟e1 c6 8.a4 b6 9.♟a2 a6 10.♟e3 ♟b8



11.dxe5

11.♟h4 seems to be the most dangerous according to theory. A quick glance suggest that after 11...exd4 12.♟xd4 (12.♟xd4 ♟c5 13.♟ad1 ♟e6=) 12...♟c5 13.♟f3! White has done well. But Black needs to try: 13...♟fd7!N and now he looks sort of safe after 14.♟d2 b5 15.axb5 axb5 16.♟e3 ♟b7∞

11...dxe5 12.♟h4

12.♟e2 ♟b4 13.♟d2 ♟e7= Skorna - Tustanowski, email 2003.

12...♟c5 13.♟f3

13.♟xd8 ♟xd8 14.♟xc5? bxc5 15.♟ab1 ♟a5→

13.♟f5! looked more dangerous. 13...♟xf5! (After 13...♟fxe4 14.♟xe7+ ♟xe7 15.♟xe4 ♟xe4 16.♟f3! White is better. Sam had planned this, but then got distracted. Here I believed that I could play 16...♟d6 and even be better, but after 17.♟f4!± all this crumbles into dust.) 14.exf5 ♟xd1 15.♟axd1 b5 White is potentially a bit better here, although Black looks reasonably solid.

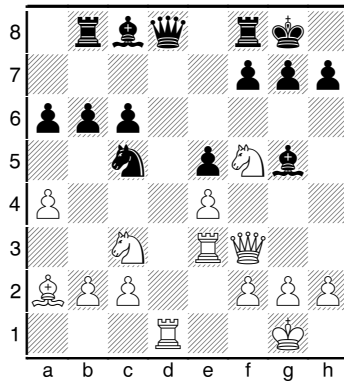
13...♟g4 14.♟f5

It made no sense to me not to include 14.♟ad1, but I do not think White is better. It is even more surprising to see that this would be a novelty!

14...♟xe3 15.♟xe3N

This was a bit weird, but not yet a significant mistake.

15.♟xe3 ♟g5 16.♟d1 and now:



a) I had planned 16...♞f6!?N 17.♞d6 ♕e6 18.♞xc6 ♕xe3 19.♞xe3 ♖h8∞

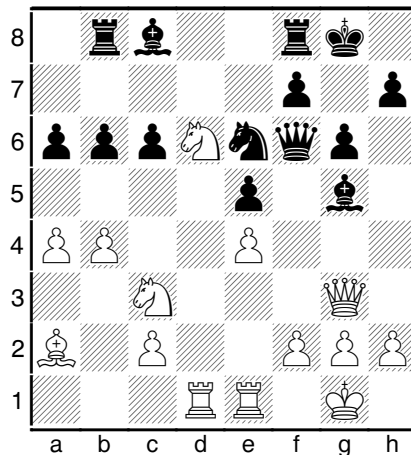
b) 16...♞c7 is more solid. After 17.♞g3 Black can take on f5 with complete equality. He was also ok after 17...♕f6 18.b4 ♜e6, but here he started to drift: 19.♞d6 ♞d8 20.♞e3 ♞xd6 21.♞xd6 g6? 22.♞d1? (22.b5!±) 22...♕g7 23.♜d6 ♜d8? (23...♕d7=) 24.h3 ♕e6? 25.♜e8!+- e5 falls. 25...♞e7 26.♜xg7 ♕xa2 27.♜f5 ♞e6 28.♜xa2 1-0 (Stolz-Dietze, Germany 2007)

15...♕g5! 16.♞g3 ♞f6 17.b4?!

White already needs to play actively to justify his choices. 17.♞ad1 ♕e6 18.♞d6 ♞bd8 19.♞xc6! ♕d2 (19...♜xe4? 20.♜xe4 ♞xf5 21.h4!! ♕xh4 22.♞xh4 ♕xa2 23.b3±) 20.f3 ♕xe1 21.♞xe1☞

17...♜e6 18.♞ad1 g6! 19.♜d6?

19.♞d6 ♕f4 20.♞h4 (20.♞d3 gxf5 21.exf5 e4!!F Franklin.) 20...♞xh4 21.♜xh4 ♜d4 22.♜e2F



19...♕h4!

A tricky move to see. But once I got this idea, everything just fell into place. Probably he could have defended better around here, but his position is rotten and it is very hard to play good moves when this is the case.

20.♞e3

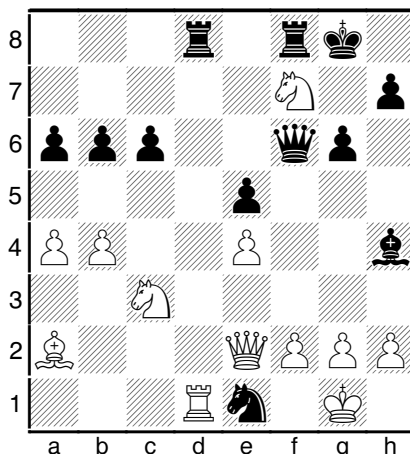
20.♞f3!? ♞xf3 21.gxf3 ♜d4F

20...♜d4 21.♜xc8 ♜xc2 22.♞e2 ♜xe1 23.♜d6

This was something I did not consider. 23.♖a7 ♖a8 24.♗xc6 ♗xg2 25.♔xg2 ♜xc6+

23...♞bd8 24.♗xf7

24.♗c4 also does not work. 24...♞xd1 25.♗xd1 ♗d3! 26.♜xd3 ♞d8 27.♜e2 ♞xd1+ 28.♜xd1 ♜xf2+ 29.♔h1 ♜xa2 and wins.



24...♜xf2+!

Simplest.

25.♜xf2 ♔xf2+ 26.♔xf2 ♞xd1 27.♗xd1 ♗d3+ 28.♔e3 ♗xb4 29.♔b3

29.♗xe5+ ♗xa2 30.♗xc6 was the last chance, though Black should win easily.

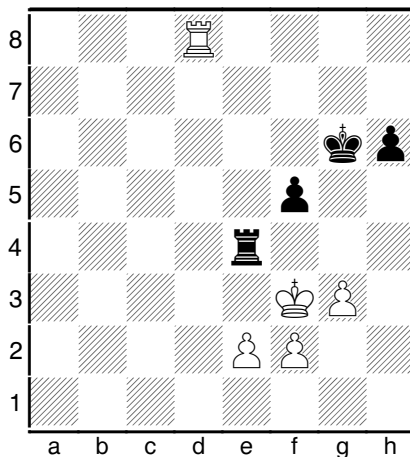
29...♞xf7 30.♗b2 b5

0-1

McNab,C (2453) - Varnam,L (2120) A37

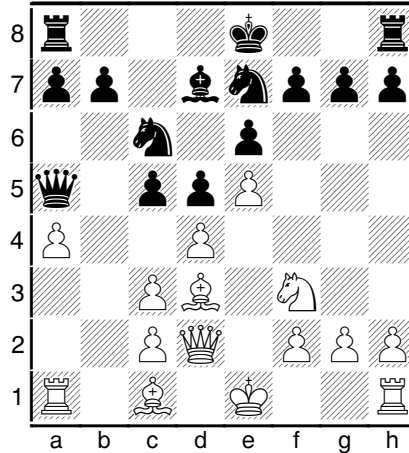
4NCL 2013-14 Hinckley ENG (5.174), 15.02.2014

White to play and win. In fact, knowing there is a win makes it quite easy, but spotting it over-the-board was good going. The solution can be found at the end of the newsletter.



Grund,Holger (2428) - Greet,Andrew N (2423) C19  
 4NCL Division 1a Hinckley Island ENG (5.143), 15.02.2014  
 Greet,Andrew

1.e4 e6 2.d4 d5 3.♘c3 ♘b4 4.e5 c5 5.a3 ♙xc3+ 6.bxc3 ♘e7 7.a4 ♘bc6 8.♘f3 ♚a5 9.♚d2 ♙d7 10.♙d3



10...f6!

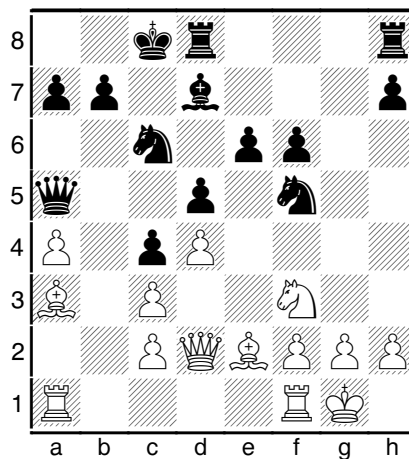
As prescribed by Emanuel Berg in GM 14.

11.exf6 gxf6 12.0-0 c4 13.♙e2 ♘f5

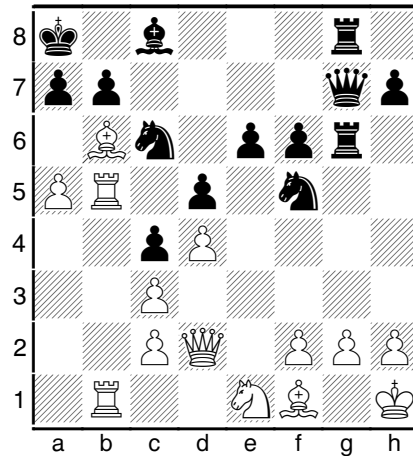
13...0-0-0 gives White the option of 14.♘h4, which is not too scary, but it does give White some breathing room on the kingside.

14.♙a3 0-0-0

I remembered that Emanuel's analysis ended somewhere around here. I think Black is at least equal, and the course of this game tends to support that assessment.



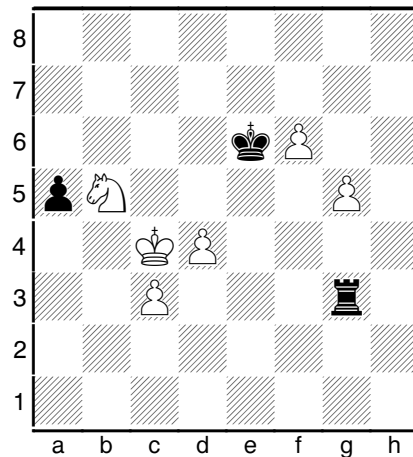
15.♚fb1 ♖b8 16.♙c5 ♙c8 17.♙f1 ♜dg8 18.♚b5 ♚c7 19.a5 ♜g6 20.♚ab1 ♖a8 21.♙b6 ♚g7 22.♖h1 ♜g8  
 23.♘e1



23...♖d6! 24.♞5b2 ♘e4 25.♞e3 ♞h6 26.♞xh6 ♞xh6+

Black is winning material. The rest of the game is a bit of a fiasco; I carelessly allowed my opponent to get back into the game, and at one point he was even winning before he blundered at the end.

27.f3 ♘d2 28.♙c7 e5 29.♙g1 ♘xb1 30.♞xb1 ♙f5 31.♞b5 ♞c8 32.♙d6 ♞d8 33.♙c5 ♞g6 34.♙f2 ♞gg8 35.g3 h5 36.♞b2 ♘xa5 37.♙e7 ♞de8 38.♙xf6 ♘c6 39.♞b5 exd4 40.♞xd5 ♙e6 41.♞xh5 ♞gf8 42.♙xd4 ♘xd4 43.cxd4 ♞d8 44.c3 ♙d5 45.f4 ♞h8 46.♞xh8 ♞xh8 47.h3 b5 48.♙e3 a5 49.♘c2 ♙b7 50.f5 ♞e8+ 51.♙d2 ♙e4 52.♘a3 ♙c6 53.g4 ♞h8 54.f6 ♙d3 55.♙xd3 cxd3 56.g5 ♙d5 57.♘xb5 ♙e6 58.♙xd3 ♞xh3+ 59.♙c4 ♞g3



60.♘c7+?

60.d5+ ♙d7 (60...♙f7 61.♘d6+ ♙g6 62.♘e4) 61.♘d4!+-

60...♙f7 61.d5 ♞xg5 62.♙b5 ♙xf6 63.c4 ♞g4 64.d6 a4 65.c5??

65.♙xa4=

65...a3 66.d7 ♙e7 67.c6 ♞d4 68.♙c5 ♞xd7 69.cxd7 ♙xd7

0-1



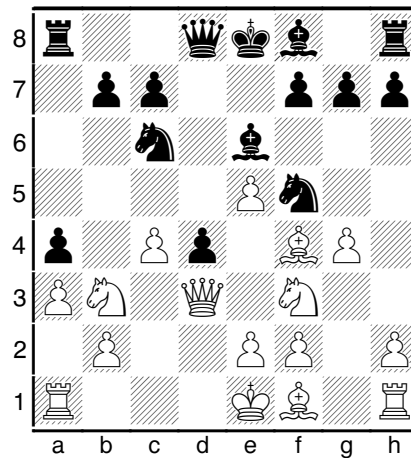
Greet, Andrew N (2423) - Rogers, Jonathan W (2300)  
 4NCL Division 1a Hinckley Island ENG (6.121), 16.02.2014  
 Greet, Andrew

1. d4 d5 2. c4 e5 3. dxe5 d4 4. ♖f3 ♘c6 5. a3 ♙e6 6. ♘bd2 ♗ge7 7. ♘b3 ♗f5 8. ♖d3

My opponent has quite a few openings in his repertoire, one of which is the Albin. I skimmed through Avrukh's analysis and remembered clearly up to this point, but forgot the recommendation a couple of moves later.

8... a5 9. ♙f4 a4 10. g4?!

I was 'out of book' here and wrongly thought this move would be strong. 10. ♘bd2! is better - see Avrukh's analysis in GM 1.



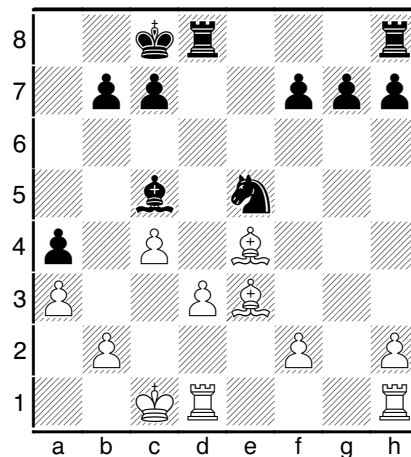
10... ♗h4 11. ♘bxd4 ♗xf3+ 12. ♗xf3 ♖xd3 13. exd3 ♙xg4

Boris points out that Black has good play. Fortunately for me, my opponent did not quite make the most of it.

14. ♙g2?!

14. ♙e2 avoids getting the knight pinned to the rook, and also defends the d3-pawn more securely. For some reason I did not even consider this move.

14... 0-0-0 15. 0-0-0 ♙c5 16. ♙e3 ♙xf3 17. ♙xf3 ♗xe5 18. ♙e4



18...♔d4

18...♔xe3+! 19.fxe3 g6♯ wins a pawn.

19.♖he1 f6 20.♗c2 g6 21.♔d5!

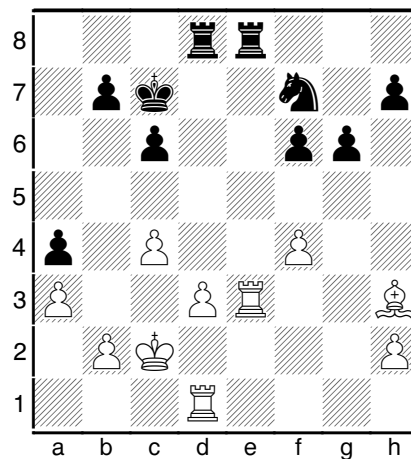
Forcing him to give up the dark-square blockade. From here I managed to outplay him quite nicely in the endgame.

21...♔xe3 22.♖xe3!

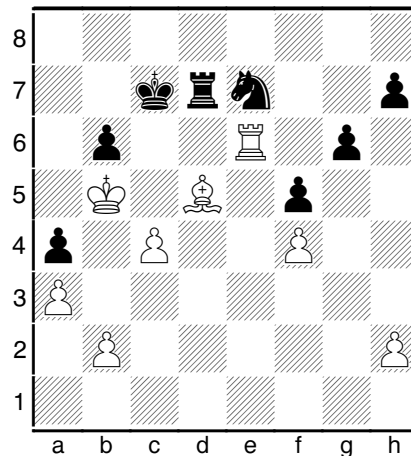
It is more important to get active along the e-file than to improve the pawn structure with fxe3.

22...c6 23.♔e6+ ♔c7 24.f4 ♖he8 25.♔h3 ♖f7

25...♖d7! is better, as the knight may eventually get to d4 via c5 and b3.



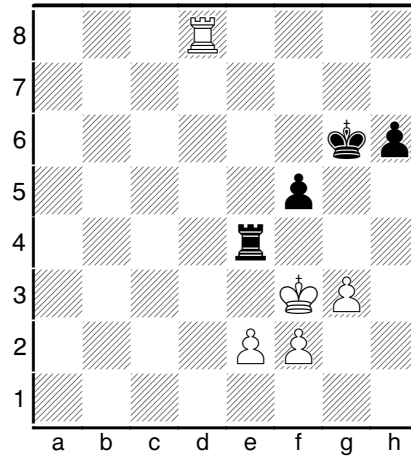
26.♖de1 ♖xe3 27.♖xe3 f5 28.♗c3 ♗d6 29.d4 b6 30.♔g2+ ♖d7 31.♗b4 ♖d8 32.d5 cxd5 33.♔xd5 ♖c6+ 34.♗b5 ♖e7 35.♖e6+ ♗c7



36.♔c6 ♖xc6 37.♖xc6+ ♗d8 38.♗xa4 ♖d4 39.♗b5 ♖xf4 40.♖xb6 ♖f2 41.b4 ♖xh2 42.c5 g5 43.♖f6 ♖f2 44.c6 ♗e7 45.c7 ♗d7 46.♖f7+ ♗c8 47.♗b6 ♖c2 48.♖xf5 g4 49.♖f8+ ♗d7 50.♖d8+ 1-0

## Solution to Exercise

McNab,C (2453) - Varnam,L (2120) A37  
 4NCL 2013-14 Hinckley ENG (5.174), 15.02.2014



**38.g4! ♖xg4**

This loses directly, but allowing g4xf5 would create two connected passed pawns, which should win surely enough.

**39.♖g8+ ♔h5 40.♖xg4 fxg4+ 41.♔f4**

The pawn ending is won by a single tempo. 41.♔f4 ♔h4 42.e4 h5 43.e5 ♔h3 44.e6 h4 45.e7 g3 46.fxg3 hxg3 47.e8♖g2 48.♖h8#

1-0